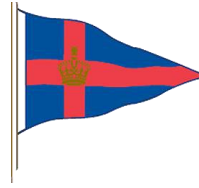


Royal London Yacht Club



Royal Southern Yacht Club



Deauville Yacht Club



Yacht Club de France



57th
COWES-DEAUVILLE RACE

**SAILING INSTRUCTIONS
AND GENERAL INFORMATION**

For IRC, FFV Osiris HN and Cruiser/Sail & Power rated boats

All times are BST (UT + 1 hour) – unless otherwise stated

Tide Times Portsmouth Friday 24 May 2019

HW16:15 BST (4.3m)

All entrants and their crews are invited to enjoy the facilities of the Royal London, Royal Southern and Deauville Yacht Clubs.

Your attention is drawn to Paragraph 17 Crew Lists

GENERAL INFORMATION

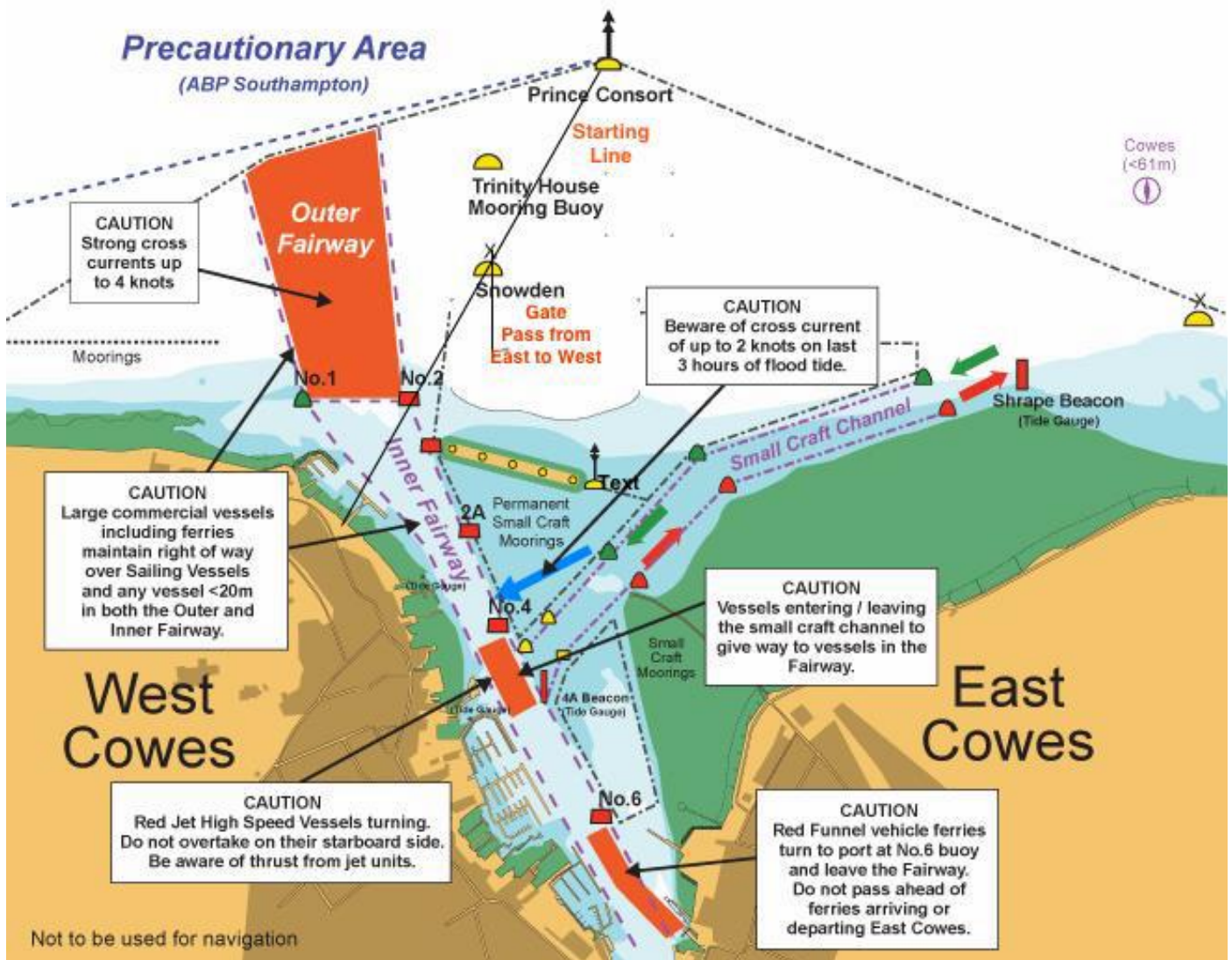
Boats entered and not starting or retiring whilst in The Solent or nearby shall notify as soon as possible: Royal London Yacht Club, Tel: +44 (0) 1983 299727 or the START TEAM on +44 07779 774 034.

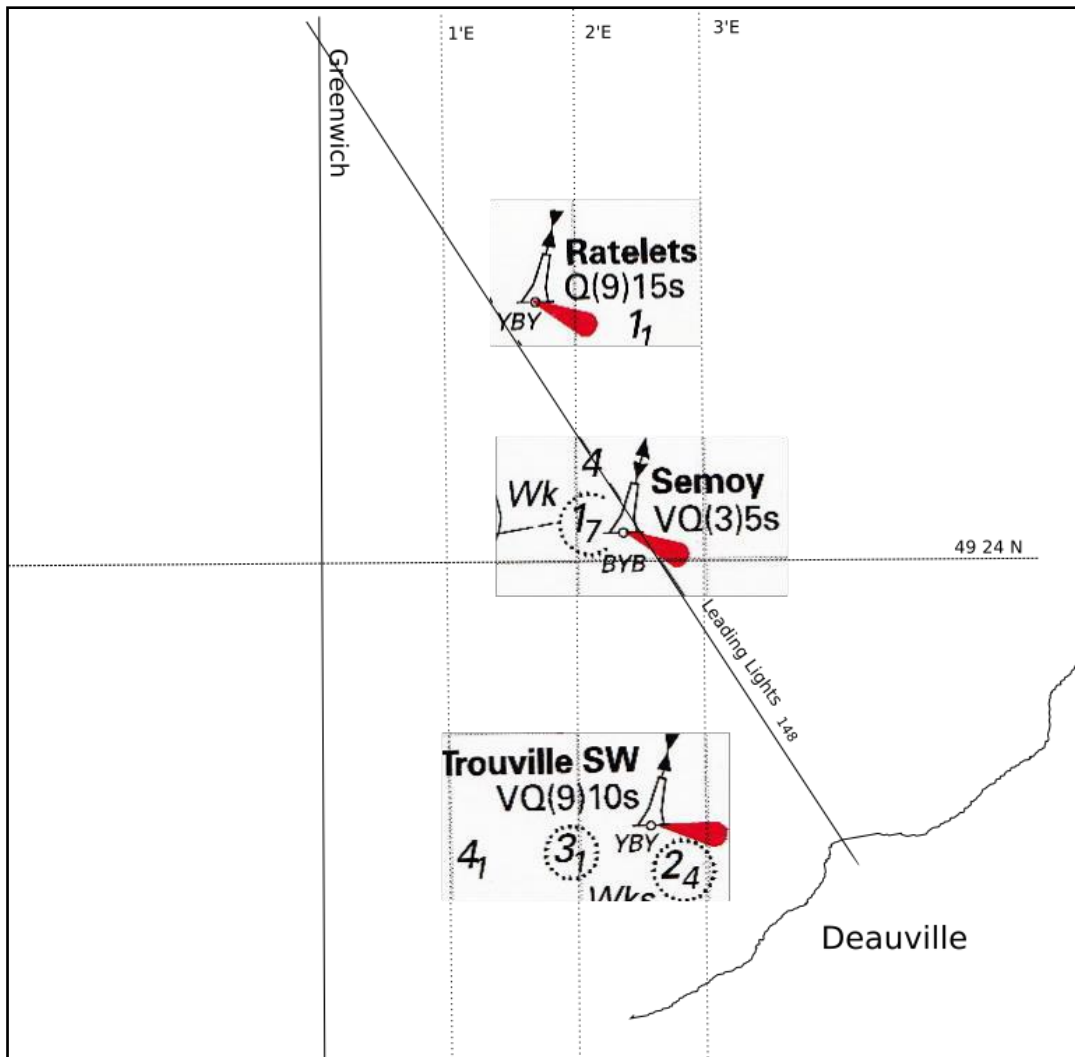
Boats retiring from the race later shall notify as soon as possible the FINISH TEAM (call sign 'Deauville Finish', VHF channel 72 or Tel: +33 (0) 2 31 88 38 19 or +44(0) 7702 166 499. Email: philip@pgage.co.uk.

REGISTRATION DOCUMENTS WARNING

All boats sailing in French waters MUST have their ships registration papers on board.

Cowes Harbour and Starting Area





Deauville and Finish at Semoy

BERTHING

Boat owners have a choice of berthing in Deauville in the inner basin or in the outer Port du Plaisance Marina. There is a limitation of 4m depth in the inner basin and numbers there will be limited to around 30 boats. Up to 80 boats may berth in the outer Port du Plaisance Marina at Deauville with a draft limitation up to 3.2m. Deeper draft boats may berth in Le Havre. Note that at low water there is less than 1m depth of water at the entrance of the Touques River.

BERTHING FEES Berthing in Deauville will be free for Saturday and Sunday.

DEAUVILLE LOCK TIMES 2019 - LOCAL TIMES {UT (GMT) + 2, BST+1}.

LOCAL TIMES

HEURES LOCALES

Day / Jour	Date	Open/ <i>Ouvert.</i>	Close/ <i>Fermet.</i>	Open/ <i>Ouvert.</i>	Close/ <i>Fermet.</i>
Friday/ <i>Vendredi</i>	24 Mai	00:15	05:44	12:46	18:05
Saturday/ <i>Samedi</i>	25 Mai	01:02	06:37	13:38	18:43
Sunday/ <i>Dimanche</i>	26 Mai	01:59	06:54	14:42	19:30

SAILING INSTRUCTIONS

1. RULES

- 1.1 Racing will be governed by the rules as defined in The Racing Rules of Sailing (RRS).
- 1.2 Between the hours of sunset and sunrise the International Rules for the Prevention of Collisions at Sea or Government Right of Way Rules shall replace the corresponding RRS Part 2 and navigation lights shall be displayed.
- 1.3 When near commercial shipping in the Solent, boats shall not enter the Moving Prohibited Zone (1000 metres ahead and 100 metres from the side or stern of vessels over 150 metres long) and shall not cause any obstruction to ships using the main channels and the ports. Boats may use engines in accordance with RRS 42.3(h) in an emergency to keep clear of a ship. Such engine use shall be reported to the race committee in writing before the time limit for protests.

2. CONDITIONS OF ENTRY

2.1 GENERAL

The Statement of Risk is set out in the Notice of Race and is deemed to have been read and understood by all entrants. The safety of a boat and her entire management, including insurance, shall be the sole and inescapable responsibility of the owner/competitor racing the yacht. The establishment of these Sailing Instructions in no way limits or reduces the complete responsibility of the owner/competitor for his crew, his boat and his management thereof.

- 2.2 All boats shall have, whilst racing, a minimum crew of at least two persons.
- 2.3 Boats may be inspected before or after the race at the discretion of the race committee.
- 2.4 Ratings will be in accordance with the RORC/UNCL IR2000 Rating System (IRC), FFV HN Osiris or Cruiser/Sail & Power. Ratings for the Sail & Power division are governed by paragraph 16.
- 2.5 Under exceptional circumstances the race committee may permit a boat to use sails carrying a distinguishing number other than that required under RRS – Appendix G, having applied in writing to the race committee.
- 2.6 Flags when racing:
 - 2.6.1 IRC Boats shall wear on a backstay a clearly visible Int. Code Pennant 1. Sail & Power boats shall wear on a backstay IC Flag C. Other HN Osiris boats need wear no flag.
 - 2.6.2 Boats whilst racing shall **not** wear an ensign or, at the masthead, a triangular pennant or burgee.

3 SAFETY

- 3.1 Adequate personal buoyancy for all crew members shall be worn or carried in the boat at all times.
- 3.2 All boats shall comply with the requirements of the current World Sailing Special Regulations governing minimum equipment and accommodation standard Category 3 Monohull with Liferaft.
- 3.3 Any boat which, having started, retires from the race or does not complete the race for any reason, shall notify the Deauville FINISH TEAM by phone to **+33 (0) 2 31 88 38 19** or by text to **+44 (0) 7702 166 499**.

4 COMMUNICATION WITH COMPETITORS

- 4.1 Notices to competitors will be posted on the official notice boards in the Royal London Yacht Club (RLYC) and the Royal Southern Yacht Club.
- 4.2 Signal flags at the start will be displayed from the RLYC flagstaff.

- 4.3 Should it be necessary to postpone or abandon the race, the appropriate signal will be made from the RLYC flagstaff and, if possible, at the Royal Southern Yacht Club.
- 4.4 Any changes in sailing instructions will, if possible be posted two hours before the advertised starting time of the race. Such change will be indicated by displaying Int Code Flag L on the RLYC flagstaff. It is then the responsibility of each yacht to report to the race committee before the first start to receive the change(s) in sailing instructions.
- 4.5 At the start VHF will use channel 72, call sign 'Royal London' or call the START TEAM on +44 7779 774034.
- 4.6 At the finish VHF will use channel 72, call sign 'Deauville Finish'. Leading yachts should call 'Deauville Finish' five miles from the Finish Line. The Deauville Finish Team may be contacted on mobile +44 (0) 7702 166 499. Yachts should maintain a dual (listening) watch on VHF channels 16 & 72.

5 IDENTIFICATION GATE

- 5.1 An identification gate will be established off Cowes – see chartlet for location. The gate is between a boat displaying an orange flag and **Snowden** buoy. EVERY BOAT SHALL PASS FROM **EAST TO WEST** ONCE THROUGH THE GATE DISPLAYING HER **SAIL NUMBER** AND **CLASS FLAG** (IF APPLICABLE) and SHOWING THEIR **FLARE PACK** until she receives a visual acknowledgment from the gate boat. Please pass near to the committee boat end of the identification gate. The penalty for an infringement of this SI shall be at the discretion of the protest committee.
- 5.2 The gate will be available from 0915 until 5 minutes after the start.

6 DIVISION

One start: IRC, HN Osiris, Cruiser and Sail & Power.

7 STARTS

7.1 Schedule

WARNING FLAG	WARNING SIGNAL	PREPARATORY SIGNAL	PREPARATORY REMOVED	START
NP 1	12:10	12:11	12:14	12:15

Boats in the Sail & Power Division may not use engines until 20 minutes after the start.

- 7.1 **Starting Line** (See chartlet). The starting line is the extension of a line from a black and orange board on the RLYC club house in line with a similar board on The Parade. Vertical light beams on the clubhouse board, that are obscured when on the start line, are navigational aids only and their failure shall not be grounds for redress.
- 7.2 The Outer Distance Mark (ODM), which does not lie on the starting line, is Prince Consort Buoy. Yachts shall pass south of the ODM. The Inner Distance Mark (IDM), which does not lie on the starting line, will be No 1 Harbour Buoy (green) when starting to the WEST and No 2 Harbour Buoy (red), when starting to the EAST. Yachts shall pass to the north of the IDM.

8 COURSES

- 8.1 If starting to the EASTWARD, a RED FLAG will be displayed from the RLYC flagstaff.
- 8.2 The EASTWARD COURSE: cross the start line noting SI 7.3. PASS BETWEEN NO MANS LAND FORT AND HORSE SAND FORT, leave BEMBRIDGE LEDGE BUOY to starboard then to the finishing line off Deauville (100 nm approx)
- 8.3 If starting to the WESTWARD, a GREEN FLAG will be displayed from the RLYC flagstaff.
- 8.4 The WESTWARD COURSE: Cross the start line noting SI 7.3. Round BRIDGE BUOY to port, then to the finishing line off Deauville. (115nm approx).

9 RECALLS and TRACKING

- 9.1 Sail numbers of those boats individually recalled may be announced on VHF Ch 72 – See SI 4. Boats that, when recalled, do not return will, without a hearing, be penalised 5% of her elapsed time (minimum 5 places) unless she gains a significant advantage in which case she shall be disqualified. Any boat so penalised shall be entitled to a hearing on request.
- 9.2 After a general recall is signaled, RRS 29.2 is changed in that a new PREPARATORY signal will be made for that class one minute after the removal of the First Substitute.
- 9.3 Changing RRS 41, 42.1 & 45; a boat may not necessarily be off her moorings and may receive outside assistance or use her engine after her preparatory signal so long as she is not within half a mile of the starting line and has not started.

10. FINISHING

- 10.1 The finishing line will be to the East of LA SEMOY buoy: 49 24' .136 N, 002' .383 E. Boats shall cross the finishing line from north to south within 1 cable (200m approx) of the buoy, when it bears 270 degrees true. Boats should pay particular attention to distinguish La Semoy from other marks, particularly Ratelets (Q 9) to the North East.
- 10.2
- Boats that entered using <https://pgage.co.uk/deauville> should log on using a smart phone before finishing and choose "Track to Finish" from the menu. When this detects that they have crossed the line they will be shown the finishing time and asked to confirm this. In the event that there is any issue there is an option to click a button as they cross the line.
 - Boats that have entered by any other means may access the same application at <https://pgage.co.uk/deauville/finish.htm>
 - Boats may also register their finish with a **text message** sent to **+44 77 02 16 64 99**. The message is to be in the form "Sail xxxx finished at hh:mm:ss BST. Engine use hh:mm", and sent as soon as possible after finishing.
- 10.3 After finishing also call 'Deauville Finish' immediately on VHF channel 72 giving boat name, sail number and finishing time. Sail & Power boats should also add their total motoring time to the text and radio message. Boats shall record the boats ahead and astern, if possible. It is intended that the DYC radio will be manned from 0600 (local time) until 1800.
- 10.4 Fast boats should call the finishing team on VHF Channel 72 when they are about 5 miles from the finish. Such calls may not be acknowledged.
- 10.5 The time limit for all boats shall be **08:00 (BST) 09:00 (French time) on Sunday 26 May 2019**. Boats not finishing by this time will be scored DNF. This amends RRS 35 and Appendix A. On Saturday 25 May the Deauville Lock opens at 13:38 and closes at 18:43 (Local Times)
- 10.6 Boats should send a representative to the Secretary's office at Deauville Yacht Club to register their arrival in the port as soon as possible after docking.

11. ALTERNATIVE PENALTIES

RRS 44.3 scoring penalty will apply. The minimum penalty will be three places.

12. PROTESTS

Protests lodged before the start relating to a rating or handicap will be heard either at the Royal London Yacht Club or the Royal Southern Yacht Club. Protests shall be lodged (or notified by text if outside the lock) within TWO hours of the protesting boat finishing in Deauville and shall be delivered in writing to the Secretary's Office at the Deauville Yacht Club preferably on a protest form available from the Secretariat. This time limit may be extended at the discretion of the protest committee. Protests will be heard as soon as possible after they have been lodged and protestors shall ensure that all necessary witnesses are available at the hearing. It is the duty of the protestor to inform the protestee of his intention to protest.

13. DECLARATIONS

Declarations shall be delivered to the race committee at the Deauville Yacht Club as soon as possible after finishing the race and within two hours of locking into the inner basin or marina.

14. RESULTS

A provisional list of results will be posted at Deauville Yacht Club as soon as possible. The final results will be posted on the Royal London, Royal Southern and the Deauville Yacht Club websites.

15. PRIZES

See the Notice of Race for the list of trophies. Division prizes will also be awarded.

The prize giving will be at the Deauville Yacht Club at **11:00 Local Time (10:00 BST) on Sunday 26 May 2019**. All entrants and their crews are invited to attend. Prize winners are to appoint a representative to receive their prize if no crew member is able to be present. Prize giving will be followed by a country style buffet at the Deauville Yacht Club.

16. SAIL AND POWER

On application to the Royal Southern Yacht Club Boats will be allocated two ratings, the Sail Only rating and the Sail and Power rating. Boats that do not use their engine will be scored using their Sail Only rating. Boats that use their engine for any time at all will be scored using their Sail and Power rating and may use their engine without any penalty for up to half the elapsed time of their race. The elapsed time is calculated as the greater of the actual elapsed time or double the time under engine. As an example, with an elapsed time of 10 hours and 6 hours under engine would be counted as 12 hours.

Engine Declaration: At the end of the race boats shall declare the time in minutes for which the engine was used.

Part 2 of Racing Rules of Sailing will be replaced in its entirety during periods of engine use. Boats using their engines, or that have used them within the previous 5 minutes shall keep clear of boats that are not using their engines. At night boats under engine shall display a steaming light until 5 minutes after they have ceased to use their engine. Any dispute between boats will be resolved by the protest committee, and for boats using engines will be determined using the IRPCAS.

17. CREW LISTS

Before starting all boats shall lodge a list of the names and mobile numbers of all persons on board, and the contact details of a person ashore who may be contacted in the case of an emergency.

This should be sent to: sailing@rlyc.org.uk

Sailing Secretary, Royal London Yacht Club, The Parade, COWES, Isle of Wight PO31 7QS

18. TRANSLATION. In the event of any discrepancy the English text of these sailing instructions will prevail.